



BSI Standards Publication

Plastics — Measurement of resistivity of conductive plastics

National foreword

This British Standard is the UK implementation of EN ISO 3915:2022. It is identical to [ISO 3915:2022](#). It supersedes [BS EN ISO 3915:1999](#), which is withdrawn.

The UK participation in its preparation was entrusted to Technical Committee PRI/21, Testing of plastics.

A list of organizations represented on this committee can be obtained on request to its committee manager.

Contractual and legal considerations

This publication has been prepared in good faith, however no representation, warranty, assurance or undertaking (express or implied) is or will be made, and no responsibility or liability is or will be accepted by BSI in relation to the adequacy, accuracy, completeness or reasonableness of this publication. All and any such responsibility and liability is expressly disclaimed to the full extent permitted by the law.

This publication is provided as is, and is to be used at the recipient's own risk.

The recipient is advised to consider seeking professional guidance with respect to its use of this publication.

This publication is not intended to constitute a contract. Users are responsible for its correct application.

© The British Standards Institution 2022
Published by BSI Standards Limited 2022

ISBN 978 0 539 15573 0

ICS 29.050; 83.080.01

Compliance with a British Standard cannot confer immunity from legal obligations.

This British Standard was published under the authority of the Standards Policy and Strategy Committee on 31 March 2022.

Amendments/corrigenda issued since publication

Date	Text affected
------	---------------

English Version

Plastics - Measurement of resistivity of conductive
plastics (ISO 3915:2022)

Plastiques - Mesurage de la résistivité des
plastiques conducteurs (ISO 3915:2022)

Kunststoffe - Messung des spezifischen
elektrischen Widerstands von leitfähigen
Kunststoffen (ISO 3915:2022)

This European Standard was approved by CEN on 12 February 2022.

CEN members are bound to comply with the CEN/CENELEC Internal Regulations which stipulate the conditions for giving this European Standard the status of a national standard without any alteration. Up-to-date lists and bibliographical references concerning such national standards may be obtained on application to the CEN-CENELEC Management Centre or to any CEN member.

This European Standard exists in three official versions (English, French, German). A version in any other language made by translation under the responsibility of a CEN member into its own language and notified to the CEN-CENELEC Management Centre has the same status as the official versions.

CEN members are the national standards bodies of Austria, Belgium, Bulgaria, Croatia, Cyprus, Czech Republic, Denmark, Estonia, Finland, France, Germany, Greece, Hungary, Iceland, Ireland, Italy, Latvia, Lithuania, Luxembourg, Malta, Netherlands, Norway, Poland, Portugal, Republic of North Macedonia, Romania, Serbia, Slovakia, Slovenia, Spain, Sweden, Switzerland, Turkey and United Kingdom.



EUROPEAN COMMITTEE FOR STANDARDIZATION
COMITÉ EUROPÉEN DE NORMALISATION
EUROPÄISCHES KOMITEE FÜR NORMUNG

CEN-CENELEC Management Centre: Rue de la Science 23, B-1040 Brussels

European foreword

This document (EN ISO 3915:2022) has been prepared by Technical Committee ISO/TC 61 "Plastics" in collaboration with Technical Committee CEN/TC 249 "Plastics" the secretariat of which is held by NBN.

This European Standard shall be given the status of a national standard, either by publication of an identical text or by endorsement, at the latest by September 2022, and conflicting national standards shall be withdrawn at the latest by September 2022.

Attention is drawn to the possibility that some of the elements of this document may be the subject of patent rights. CEN shall not be held responsible for identifying any or all such patent rights.

This document supersedes EN ISO 3915:1999.

Any feedback and questions on this document should be directed to the users' national standards body/national committee. A complete listing of these bodies can be found on the CEN website.

According to the CEN-CENELEC Internal Regulations, the national standards organizations of the following countries are bound to implement this European Standard: Austria, Belgium, Bulgaria, Croatia, Cyprus, Czech Republic, Denmark, Estonia, Finland, France, Germany, Greece, Hungary, Iceland, Ireland, Italy, Latvia, Lithuania, Luxembourg, Malta, Netherlands, Norway, Poland, Portugal, Republic of North Macedonia, Romania, Serbia, Slovakia, Slovenia, Spain, Sweden, Switzerland, Turkey and the United Kingdom.

Endorsement notice

The text of [ISO 3915:2022](#) has been approved by CEN as EN ISO 3915:2022 without any modification.

Contents		Page
Foreword		iv
Introduction		v
1	Scope	1
2	Normative references	1
3	Terms and definitions	1
4	Principle	1
5	Apparatus	1
	5.3 Electrodes	2
6	Specimen	3
7	Number of specimens	4
8	Procedure	4
9	Expression of results	4
10	Test report	5
Bibliography		6

Foreword

ISO (the International Organization for Standardization) is a worldwide federation of national standards bodies (ISO member bodies). The work of preparing International Standards is normally carried out through ISO technical committees. Each member body interested in a subject for which a technical committee has been established has the right to be represented on that committee. International organizations, governmental and non-governmental, in liaison with ISO, also take part in the work. ISO collaborates closely with the International Electrotechnical Commission (IEC) on all matters of electrotechnical standardization.

The procedures used to develop this document and those intended for its further maintenance are described in the ISO/IEC Directives, Part 1. In particular, the different approval criteria needed for the different types of ISO documents should be noted. This document was drafted in accordance with the editorial rules of the ISO/IEC Directives, Part 2 (see www.iso.org/directives).

Attention is drawn to the possibility that some of the elements of this document may be the subject of patent rights. ISO shall not be held responsible for identifying any or all such patent rights. Details of any patent rights identified during the development of the document will be in the Introduction and/or on the ISO list of patent declarations received (see www.iso.org/patents).

Any trade name used in this document is information given for the convenience of users and does not constitute an endorsement.

For an explanation of the voluntary nature of standards, the meaning of ISO specific terms and expressions related to conformity assessment, as well as information about ISO's adherence to the World Trade Organization (WTO) principles in the Technical Barriers to Trade (TBT), see www.iso.org/iso/foreword.html.

This document was prepared by Technical Committee ISO/TC 61, *Plastics*, Subcommittee SC 5, *Physical-chemical properties*, in collaboration with the European Committee for Standardization (CEN) Technical Committee CEN/TC 249, *Plastics*, in accordance with the Agreement on technical cooperation between ISO and CEN (Vienna Agreement).

This second edition cancels and replaces the first edition ([ISO 3915:1981](http://www.iso.org/iso/3915:1981)), which has been technically revised.

The main changes compared to the previous edition are as follows:

- the apparatus specifications have been revised;
- the document has been editorially revised.

Any feedback or questions on this document should be directed to the user's national standards body. A complete listing of these bodies can be found at www.iso.org/members.html.

Introduction

0.1 General

The method specified in this document is technically similar to that specified for rubber in [ISO 1853](#).

However, it differs from that method in certain details, especially those associated with the greater stiffness of the plastic samples, and in particular in the limitation on specimen width. It takes into account two problems encountered in the measurement of resistivity of conductive plastics, namely the sensitivity of these materials to their temperature-history and strain-history, and the difficulty of making adequate electrical contact with them.

The prescribed width of the specimen is mandatory for reference purposes; however, a wider strip may be used, with correspondingly wider electrodes. There is a danger in using a wide strip, if the strip is slightly twisted and at the same time somewhat non-uniform in its resistivity. It is then possible to obtain erroneous results; the potential electrode nearer to the positive current electrode can even be found to be negative with respect to the other potential electrode.

0.2 Effect of temperature changes and strain on conductive plastics

As mentioned, the resistance of these materials is sensitive to their temperature-history and strain-history. The relationships are complex and arise from the kinetic energy and structural configuration of the carbon particles in the polymer.

The resistivity may be increased by the effects of strain produced by (or subsequent to) removal from the mould, and a treatment is described for reducing specimens to a constant strain and temperature condition before measurements are carried out on them. Specimens are also cut in two perpendicular directions to assess anisotropy.

0.3 Electrode systems (see [5.3](#))

Certain types of electrode, when applied to these polymers, have a contact resistance which can be many thousand times greater than the intrinsic resistance of the specimen. Dry contacts under light pressure or point contacts give very high resistances. However, the present test method eliminates the effects of contact resistances unless these are excessively high. (In such a case, no result, rather than a wrong one, is generally obtained.)

This page deliberately left blank

Plastics — Measurement of resistivity of conductive plastics

1 Scope

This document specifies the requirements for the laboratory testing of the resistivity of specially prepared specimens of plastics rendered conductive by the inclusion of conductive fillers or suitable modification of the structure. The test is applicable to materials of resistivity less than $10^6 \Omega \cdot \text{cm}$ ($10^4 \Omega \cdot \text{m}$).

The result is not strictly a volume resistivity, because of surface conduction, but the effects of the latter are generally negligible.

2 Normative references

There are no normative references in this document.

3 Terms and definitions

No terms and definitions are listed in this document.

ISO and IEC maintain terminological databases for use in standardization at the following addresses:

- ISO Online browsing platform: available at <https://www.iso.org/obp>
- IEC Electropedia: available at <https://www.electropedia.org/>

4 Principle

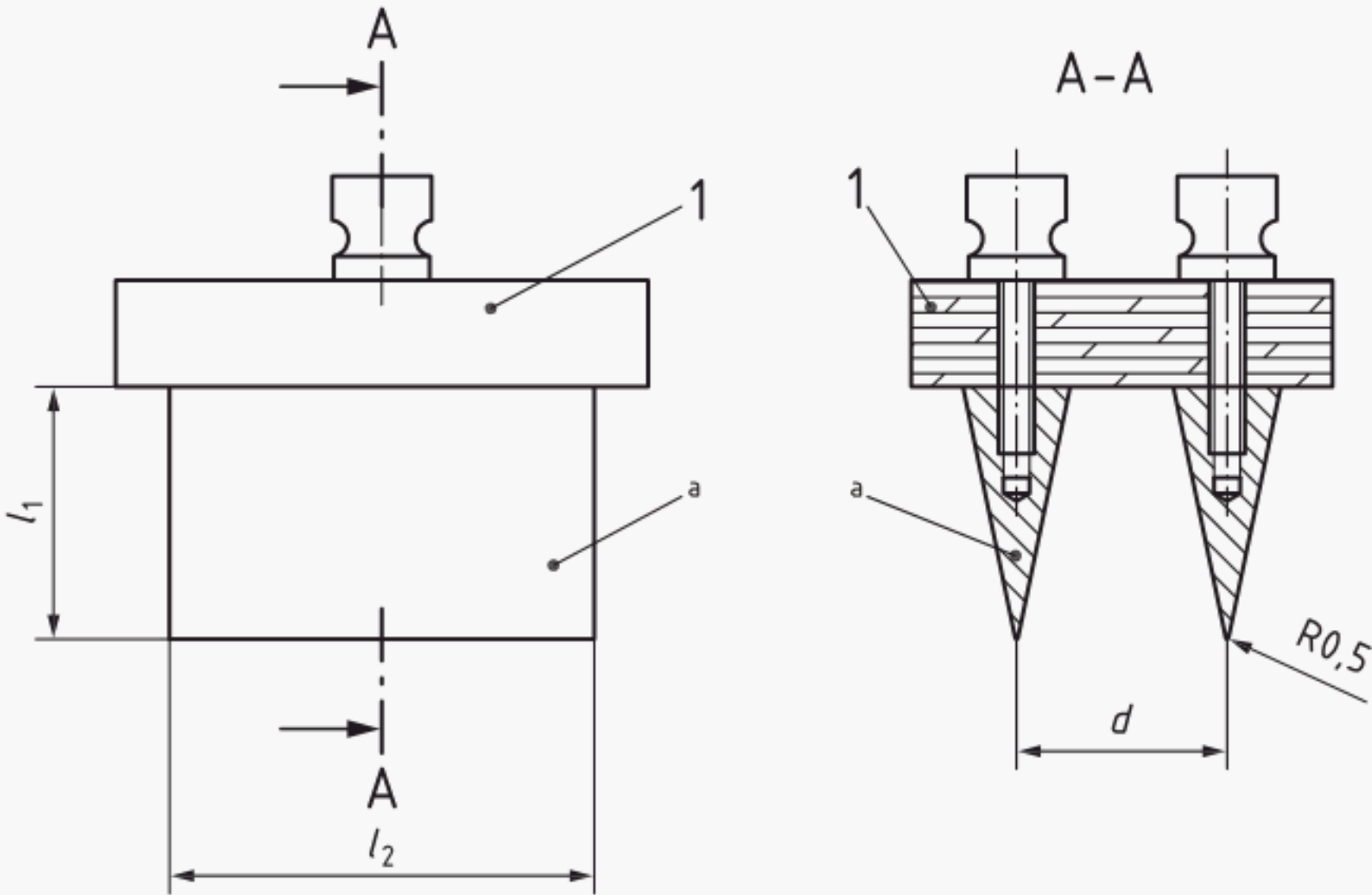
The principle of the four-terminal method of test is mandatory and the recommended specimen size and electrode design shall be adhered to for reference purposes, but it can sometimes be necessary to test a wider strip with electrodes of a different construction.

A stable direct current of magnitude (I) is passed between electrodes at the two ends of a strip of the material under test. The voltage drop (ΔU) between two potential electrodes is measured with an electrometer. The resistance of the portion of the strip between the potential electrodes is given by $R = \Delta U/I$, and is independent of contact resistances. Thus, the resistivity can be calculated.

5 Apparatus

See [Figure 1](#) for schematic diagram of test circuit.

specimen length by at least 60 mm. The distance between the contacts shall be known to an accuracy of $\pm 2\%$. The insulation resistance between the contacts shall be at least $10^{12} \Omega$.



Key

- | | | | |
|-------|--------------------|---|--|
| l_1 | height of contacts | 1 | polystyrene |
| l_2 | width of contacts | a | Brass, nickel or stainless steel. |
| d | contact distance | | R0,5 radius of potentiometric electrode tip (0,5 mm) |

Figure 2 — Potentiometric electrodes

- 5.4 Electrometer**, having an input resistance greater than $10^{11} \Omega$ and measuring to an accuracy of $\pm 5\%$.
- 5.5 Sheet of highly insulating material**, having a volume resistivity greater than $10^{15} \Omega \cdot \text{cm}$.
- 5.6 Oven**, capable of being maintained at a temperature of $(70 \pm 2) ^\circ\text{C}$, or $(60 \pm 2) ^\circ\text{C}$, if required.

6 Specimen

The specimen shall be a strip of preferably 10 mm width. Higher widths may be used as long as they do not exceed the width of the potentiometric electrodes (see 5.3.2). The specimen shall be 70 mm to 150 mm long and shall normally be 3 mm to 4 mm thick with a tolerance on uniformity of thickness of $\pm 5\%$. Thicker or thinner specimens may be cut from sheets or products. Care shall be taken to avoid bending or stretching the sheets or specimens, especially when they are thinner than standard.

The specimen may be cut with a knife or razor blade, but care shall be taken to minimize distortion as this can affect the resistance values.

The surfaces of the specimen shall be clean; if necessary, they may be cleaned by rubbing with fuller's earth (hydrated magnesium-aluminium silicate) and water, rinsing with distilled water and allowing to dry.¹⁾ The surfaces shall neither be buffed nor abraded, nor shall they be cleaned with organic materials that attack or swell the material.

1) A particular drying method can be stated in the material specification.

7 Number of specimens

From each of two perpendicular directions, three specimens of equal size shall be prepared and tested. The two directions should, where possible, be chosen to be along and across any direction of flow during processing.

8 Procedure

8.1 After preparation, allow the specimen to remain at room temperature and ambient humidity conditions for at least 16 h.

8.2 Prior to the commencement of the test, connect the current electrodes (5.3.1) to the ends of the specimen, either by using the clamps or grips, or by covering the same area with conductive paint.

8.3 The required conditioning of the specimen should be described in the material specification. If this is not the case, the following procedure can be used: Immediately after applying the current electrodes, place the specimen on the sheet of highly insulating material (5.5) and heat in the oven (5.6) for 2 h at a temperature of $(70 \pm 2)^\circ\text{C}$ to remove strains and irregularities caused by previous treatment. Cool for at least 1 h and test at $(23 \pm 2)^\circ\text{C}$ and $(50 \pm 5)\%$ relative humidity without disturbing the specimen. The specimen shall always be tested on the sheet of insulating material. With some materials, distortion can occur at 70°C and heating for 5 h at $(60 \pm 2)^\circ\text{C}$ can then be preferable.

8.4 Place the potentiometric electrode system (5.3.2) on the specimen, ensuring that the knife-edge contacts are at right angles to the direction of current flow and that neither potentiometric electrode is within 20 mm of a current electrode. Apply the current and measure the voltage drop between the potentiometric electrodes using the electrometer (5.4).

Repeat the measuring procedure twice more on the same specimen, moving the potentiometric electrodes each time to obtain measurements over lengths of specimen evenly distributed between the current electrodes.

8.5 Test the other five specimens similarly.

9 Expression of results

9.1 Calculate the resistance R , in ohms, corresponding to each position of the potentiometric electrodes, using Formula (1):

$$R = \frac{\Delta U}{I} \tag{1}$$

where

- ΔU is the voltage drop, in volts, between the potentiometric electrodes;
- I is the current, in amperes, through the specimen.

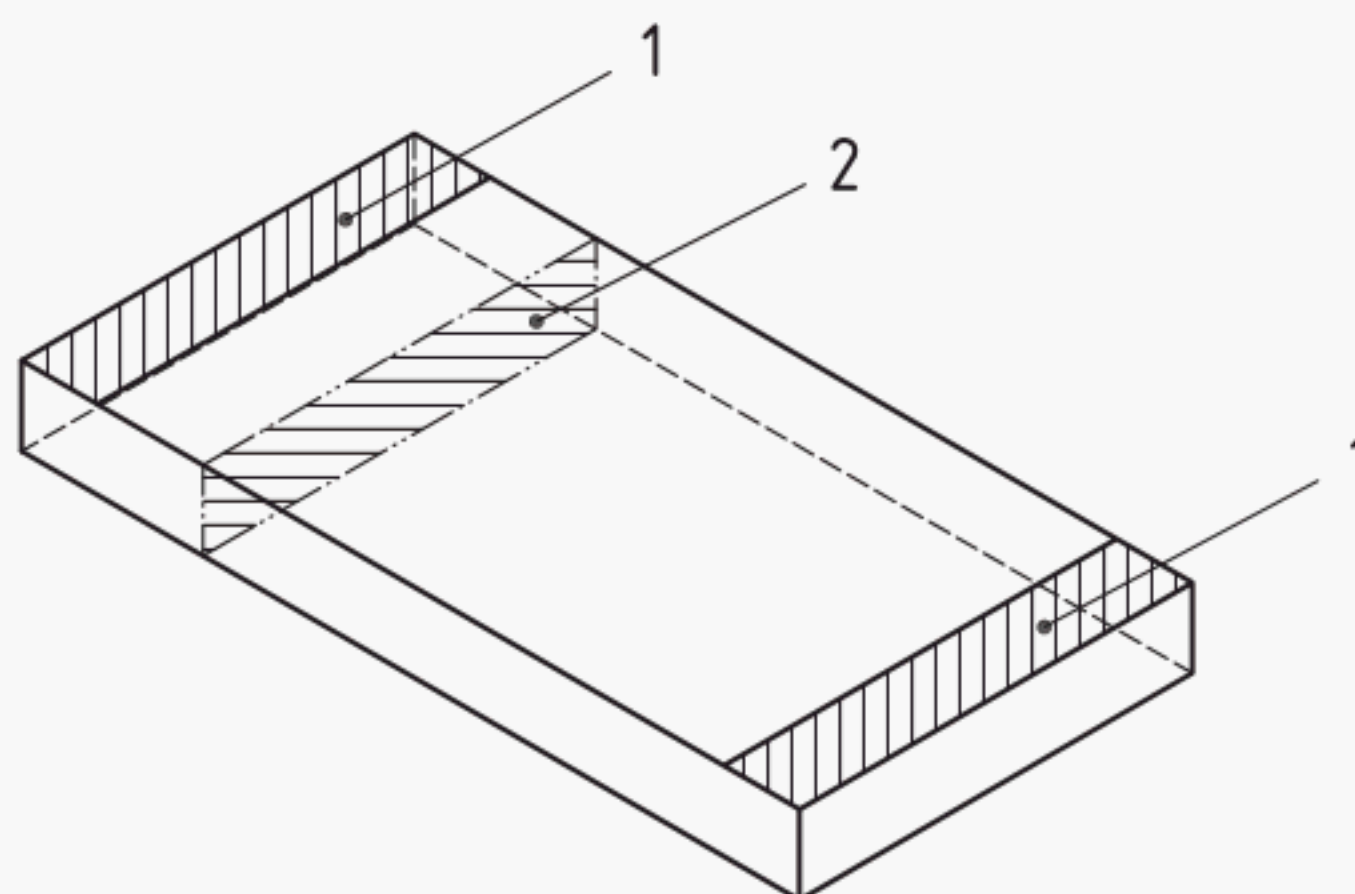
9.2 The resistivity ρ , expressed in ohm centimetres, is given by Formula (2):

$$\rho = \frac{R \times A}{d} \quad (2)$$

where

- R is the resistance, in ohms, calculated in accordance with 9.1;
- A is the cross-sectional area, in square centimetres, of a specimen perpendicular to the current flow (see Figure 3);
- d is the distance, in centimetre, between the potentiometric electrodes.

For each direction of current flow, determine the median of the nine resistivity values thus calculated.



Key

- 1 current electrodes
- 2 cross-sectional area (A)

Figure 3 — Test specimen

10 Test report

The test report shall include the following particulars:

- a) a reference to this document, including its year of publication, i.e. [ISO 3915](#);
- b) complete identification of the sample, including processing details if relevant;
- c) dimensions of the test specimen;
- d) conditioning, if different from that described in [8.3](#), or if the 60 °C conditioning is used;
- e) the width of and the distance between the potentiometric electrodes;
- f) the applied current and the average value of voltage drop measured;
- g) the individual resistivity values and the medians of the results in the two directions of test;
- h) any other details that can have had an effect on the test results;
- i) any deviations from the procedure;
- k) any unusual features observed;
- l) the date of the test.

Bibliography

[1] [ISO 1853](#), *Conducting and dissipative rubbers, vulcanized or thermoplastic — Measurement of resistivity*

This page deliberately left blank

British Standards Institution (BSI)

BSI is the national body responsible for preparing British Standards and other standards-related publications, information and services.

BSI is incorporated by Royal Charter. British Standards and other standardization products are published by BSI Standards Limited.

About us

We bring together business, industry, government, consumers, innovators and others to shape their combined experience and expertise into standards-based solutions.

The knowledge embodied in our standards has been carefully assembled in a dependable format and refined through our open consultation process. Organizations of all sizes and across all sectors choose standards to help them achieve their goals.

Information on standards

We can provide you with the knowledge that your organization needs to succeed. Find out more about British Standards by visiting our website at bsigroup.com/standards or contacting our Customer Services team or Knowledge Centre.

Buying standards

You can buy and download PDF versions of BSI publications, including British and adopted European and international standards, through our website at bsigroup.com/shop, where hard copies can also be purchased.

If you need international and foreign standards from other Standards Development Organizations, hard copies can be ordered from our Customer Services team.

Copyright in BSI publications

All the content in BSI publications, including British Standards, is the property of and copyrighted by BSI or some person or entity that owns copyright in the information used (such as the international standardization bodies) and has formally licensed such information to BSI for commercial publication and use.

Save for the provisions below, you may not transfer, share or disseminate any portion of the standard to any other person. You may not adapt, distribute, commercially exploit or publicly display the standard or any portion thereof in any manner whatsoever without BSI's prior written consent.

Storing and using standards

Standards purchased in soft copy format:

- A British Standard purchased in soft copy format is licensed to a sole named user for personal or internal company use only.
- The standard may be stored on more than one device provided that it is accessible by the sole named user only and that only one copy is accessed at any one time.
- A single paper copy may be printed for personal or internal company use only.

Standards purchased in hard copy format:

- A British Standard purchased in hard copy format is for personal or internal company use only.
- It may not be further reproduced – in any format – to create an additional copy. This includes scanning of the document.

If you need more than one copy of the document, or if you wish to share the document on an internal network, you can save money by choosing a subscription product (see 'Subscriptions').

Reproducing extracts

For permission to reproduce content from BSI publications contact the BSI Copyright and Licensing team.

Subscriptions

Our range of subscription services are designed to make using standards easier for you. For further information on our subscription products go to bsigroup.com/subscriptions.

With **British Standards Online (BSOL)** you'll have instant access to over 55,000 British and adopted European and international standards from your desktop. It's available 24/7 and is refreshed daily so you'll always be up to date.

You can keep in touch with standards developments and receive substantial discounts on the purchase price of standards, both in single copy and subscription format, by becoming a **BSI Subscribing Member**.

PLUS is an updating service exclusive to BSI Subscribing Members. You will automatically receive the latest hard copy of your standards when they're revised or replaced.

To find out more about becoming a BSI Subscribing Member and the benefits of membership, please visit bsigroup.com/shop.

With a **Multi-User Network Licence (MUNL)** you are able to host standards publications on your intranet. Licences can cover as few or as many users as you wish. With updates supplied as soon as they're available, you can be sure your documentation is current. For further information, email cservices@bsigroup.com.

Revisions

Our British Standards and other publications are updated by amendment or revision.

We continually improve the quality of our products and services to benefit your business. If you find an inaccuracy or ambiguity within a British Standard or other BSI publication please inform the Knowledge Centre.

Useful Contacts

Customer Services

Tel: +44 345 086 9001

Email: cservices@bsigroup.com

Subscriptions

Tel: +44 345 086 9001

Email: subscriptions@bsigroup.com

Knowledge Centre

Tel: +44 20 8996 7004

Email: knowledgecentre@bsigroup.com

Copyright & Licensing

Tel: +44 20 8996 7070

Email: copyright@bsigroup.com

BSI Group Headquarters

389 Chiswick High Road London W4 4AL UK

